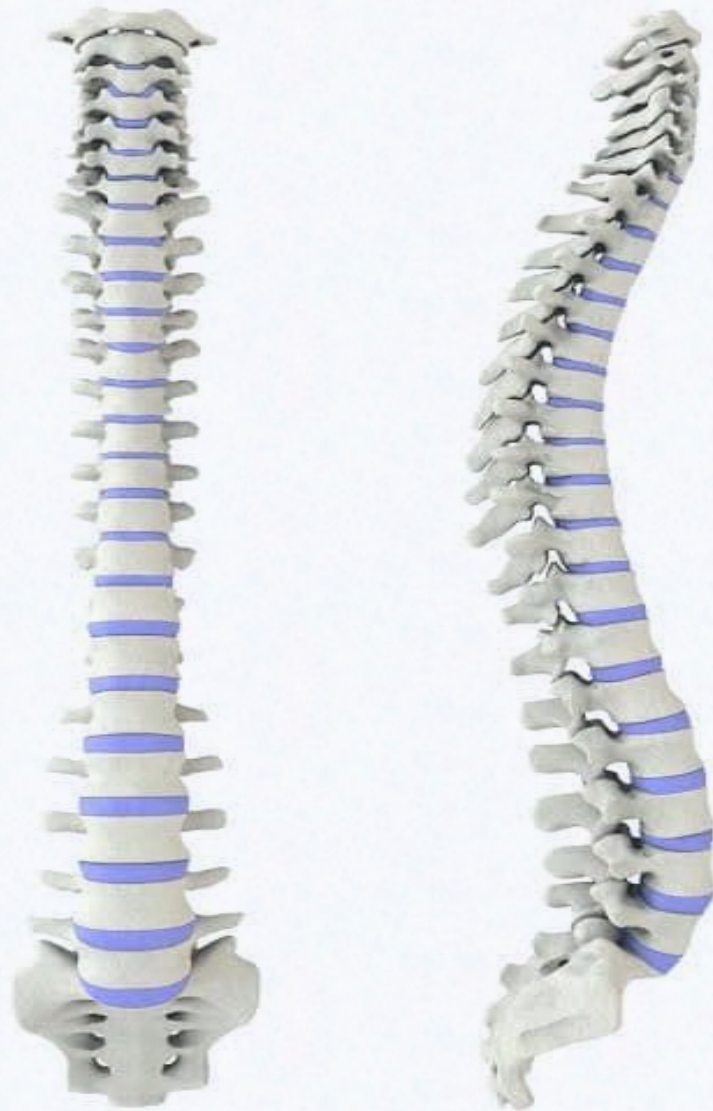


# SPINE SOLUTIONS

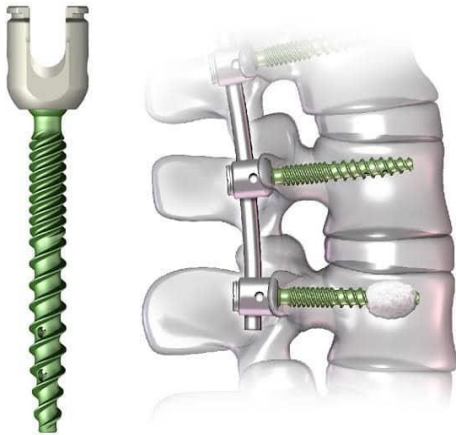


*.....Bridging the gap to qualitative healthcare*

**Pedicle Screw**



**Fenestrated screw**



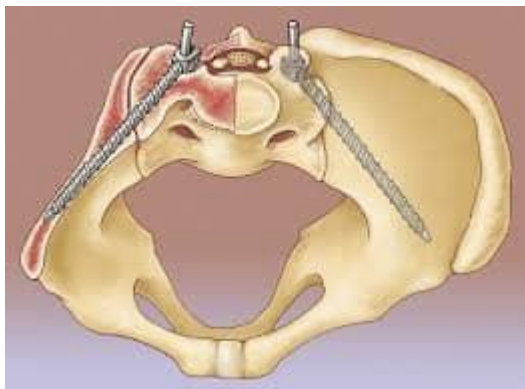
**Cannulated Screw**



**MIS Screw**



**Sacroiliac Screw**

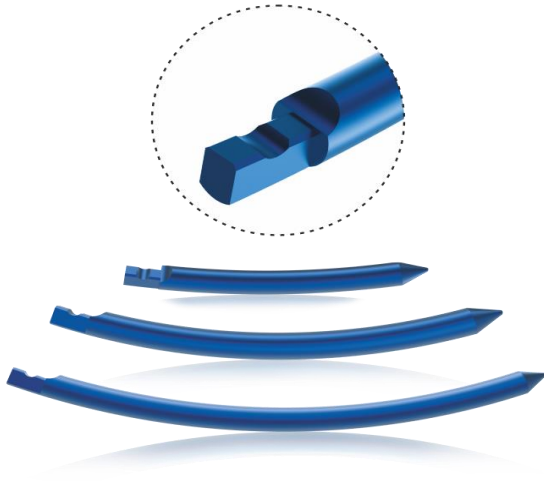


**Specifications for Pedicle Screw System (mm)**

4.5 mm	5.0mm	5.5mm	6.0mm	6.5mm	7.5mm	Iliac Screw (7.5/8.0)
4.5 x 25	5.0 x 25	5.5 x 25	6.0 x 25	6.5 x 30	7.5 x 35	60
4.5 x 30	5.0 x 30	5.5 x 30	6.0 x 30	6.5 x 35	7.5 x 40	65
4.5 x 35	5.0 x 35	5.5 x 35	6.0 x 35	6.5 x 40	7.5 x 45	70
4.5 x 40	5.0 x 40	5.5 x 40	6.0 x 40	6.5 x 45	7.5 x 50	75
	5.0 x 45	5.5 x 45	6.0 x 45	6.5 x 50	7.5 x 55	80
	5.0 x 50	5.5 x 50	6.0 x 50	6.5 x 55	7.5 x 60	85
	5.0 x 55	5.5 x 55	6.0 x 55			90

## NIKOS - THORACOLUMBAR PRODUCT

### MIS Connecting Rods



Specifications
<b>Straight and Pre-Bent Connecting Rod-(mm)</b>
3.0
4.0
5.0
6.0
7.0
8.0
9.0
350
550

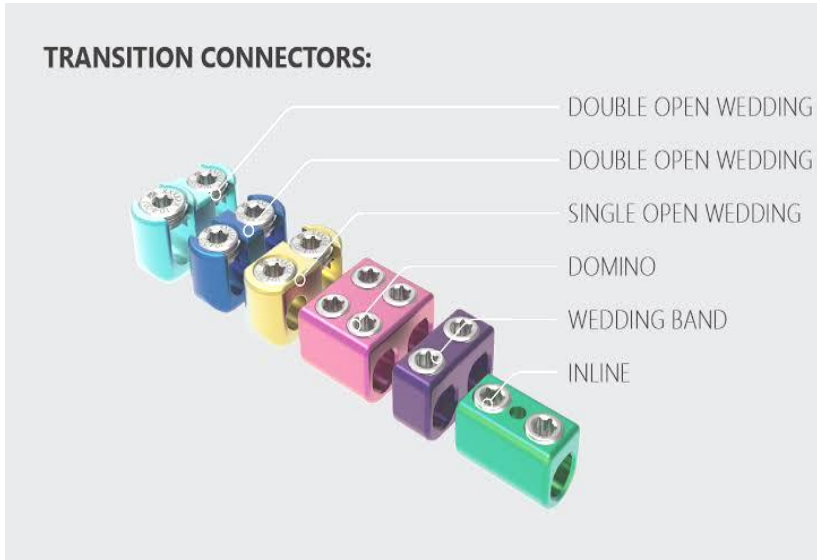
### Regular Connecting Rod



Specifications
<b>Straight and Pre-Bent Connecting Rod-(mm)</b>
3.0
4.0
5.0
6.0
7.0
8.0
9.0
350
550

## NIKOS THORACOLUMBAR PRODUCT

### Connectors



**Cross Connector**



**Lateral Connector**



**Hook**



**Domino Connector**

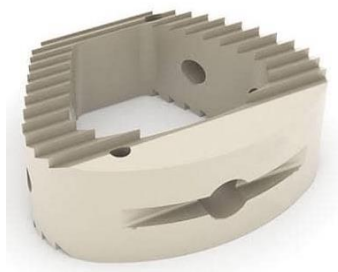
## SOAR-INTERBODY PRODUCT

### Bullet and Bannana Lumbar Cage



Specifications						
TLIF Cage (Banana)				PLIF Cage (Bullet)		
S/N	Height (mm)	Depth (mm)	Width (mm)	Height (mm)	Depth (mm)	Width (mm)
1.	7...13	28 and 32	10	7.....13	24,28,32	10

### Cervical Interbody Cage



### Zero Profile Cage

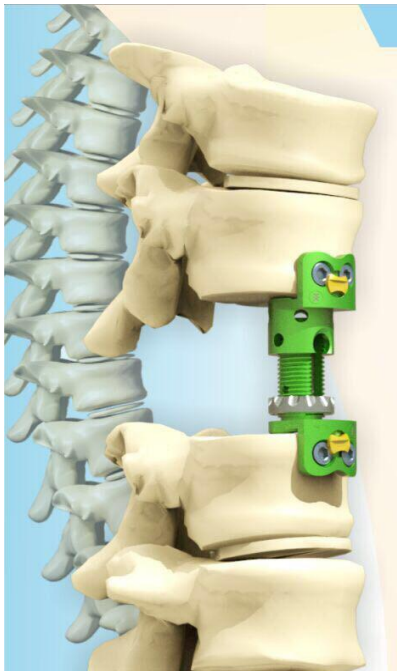


**SOAR-INTERBODY PRODUCT**

**Zero Profile Cage with Plate**



**Expandable Cage with Plate**



Specifications						
Cervical Cage				Cervical Zero Profile Cage		
S/N	Height (mm)	Depth (mm)	Width (mm)	Height (mm)	Depth (mm)	Width (mm)
1.	5,6,7,8, and 9	16	13	5,6,7,8,9 and 10	16	13

# SOAR-INTERBODY PRODUCT

## Artificial Disc Replacement



Specifications		
Artificial Disc Replacement		
<i>Height (mm)</i>	<i>Depth (mm)</i>	<i>Width (mm)</i>
4,5,6,7,8, and 9	12 and 14	14 and 16



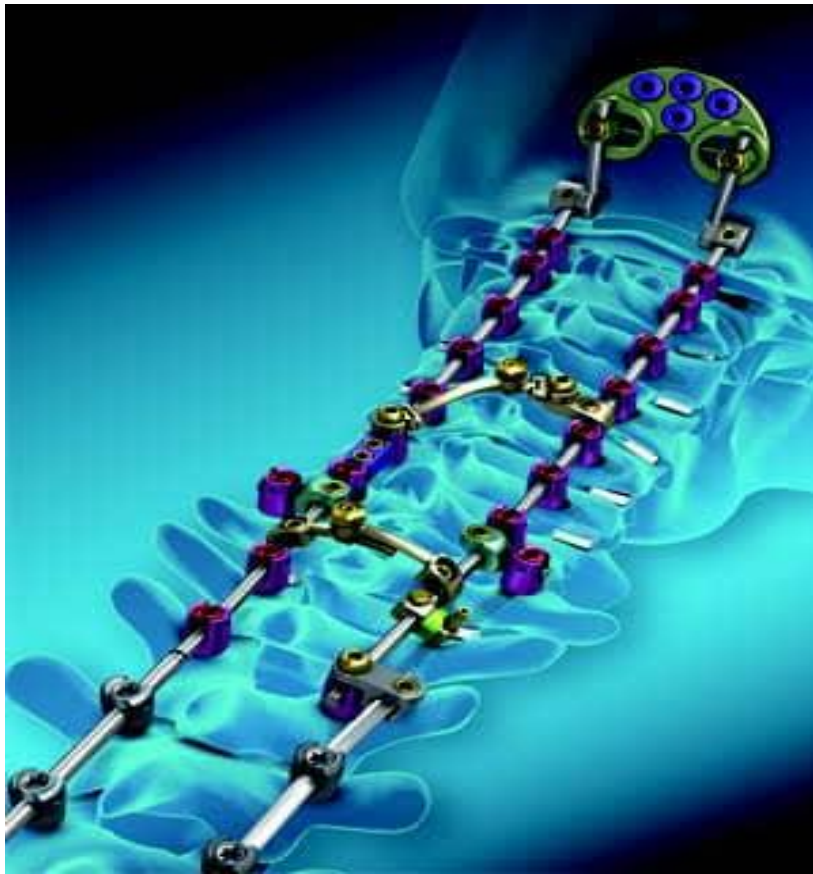
**ASCENT – CERVICAL PRODUCTS**

**Anterior Cervical Plate and Screws**



Specifications	
ACDF PLATES	Self Drilling/Self Tapping Screws
4 Holes x 19.0mm Length	Φ4.0 x 10mm
4 Holes x 21.0mm Length	Φ4.0 x 12mm
4 Holes x 23.0mm Length	Φ4.0 x 14mm
4 Holes x 25.0mm Length	Φ4.0 x 16mm
4 Holes x 27.5mm Length	Φ4.0 x 18mm
4 Holes x 30.0mm Length	Φ4.0 x 20mm
6 Holes x 32.5mm Length	Φ4.5 x 10mm
6 Holes x 35.0mm Length	Φ4.5 x 12mm
6 Holes x 37.5mm Length	Φ4.5 x 14mm
6 Holes x 40.0mm Length	Φ4.5 x 16mm
6 Holes x 42.5mm Length	Φ4.5 x 18mm
6 Holes x 45.0mm Length	Φ4.5 x 20mm
6 Holes x 47.5mm Length	
6 Holes x 50.0mm Length	
8 Holes x 52.5mm Length	
8 Holes x 55.0mm Length	
8 Holes x 57.5mm Length	
8 Holes x 60.0mm Length	
8 Holes x 62.5mm Length	
8 Holes x 65.0mm Length	
8 Holes x 67.5mm Length	
8 Holes x 70.0mm Length	
8 Holes x 72.5mm Length	
10 Holes x 75.0mm Length	
10 Holes x 77.5mm Length	
10 Holes x 80.0mm Length	

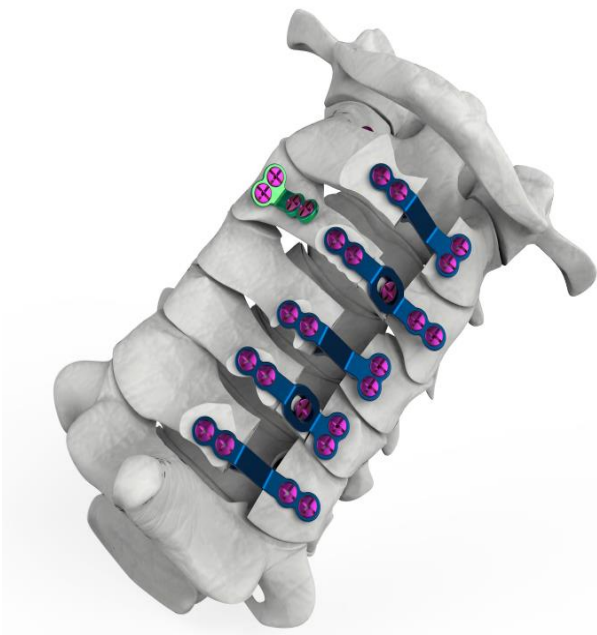
Posterior Cervical Lateral Mass Screw



Specifications					
Lateral Mass Screw	Occipital Plate	Occipital Screw	Occipital Pre-Bent Rod	Occipital Straight Rod	Occipital Crosslink
$\Phi 3.5 \times 10mm$	27-31mm	$\Phi 3.5 \times 6mm$	$\Phi 3.5 \times 220mm$	$\Phi 3.5 \times 30mm$	$\Phi 3.5 \times 40mm$
$\Phi 3.5 \times 12mm$	32-36mm	$\Phi 3.5 \times 8mm$		$\Phi 3.5 \times 40mm$	$\Phi 3.5 \times 50mm$
$\Phi 3.5 \times 14mm$	37-41mm	$\Phi 3.5 \times 10mm$		$\Phi 3.5 \times 50mm$	$\Phi 3.5 \times 60mm$
$\Phi 3.5 \times 16mm$		$\Phi 3.5 \times 12mm$		$\Phi 3.5 \times 60mm$	$\Phi 3.5 \times 40mm$
$\Phi 3.5 \times 18mm$		$\Phi 3.5 \times 14mm$		$\Phi 3.5 \times 70mm$	
$\Phi 3.5 \times 20mm$		$\Phi 4.0 \times 6mm$		$\Phi 3.5 \times 80mm$	
$\Phi 3.5 \times 24mm$		$\Phi 4.0 \times 8mm$		$\Phi 3.5 \times 90mm$	
$\Phi 3.5 \times 26mm$		$\Phi 4.0 \times 10mm$		$\Phi 3.5 \times 100mm$	
$\Phi 3.5 \times 28mm$		$\Phi 4.0 \times 12mm$			
$\Phi 3.5 \times 30mm$		$\Phi 4.0 \times 14mm$			
$\Phi 3.5 \times 40mm$					
$\Phi 3.5 \times 50mm$					
$\Phi 3.5 \times 60mm$					
$\Phi 4.0 \times 10mm$					
$\Phi 4.0 \times 12mm$					
$\Phi 4.0 \times 14mm$					
$\Phi 4.0 \times 16mm$					
$\Phi 4.0 \times 18mm$					
			<b>Dual Diameter Rod</b>		
$\Phi 4.0 \times 20mm$			3.5/5.5-500mm		
$\Phi 4.0 \times 24mm$					
$\Phi 4.0 \times 26mm$					
$\Phi 4.0 \times 28mm$					
$\Phi 4.0 \times 30mm$					

## ASCENT – CERVICAL PRODUCTS

### Laminoplasty Plate and Screws



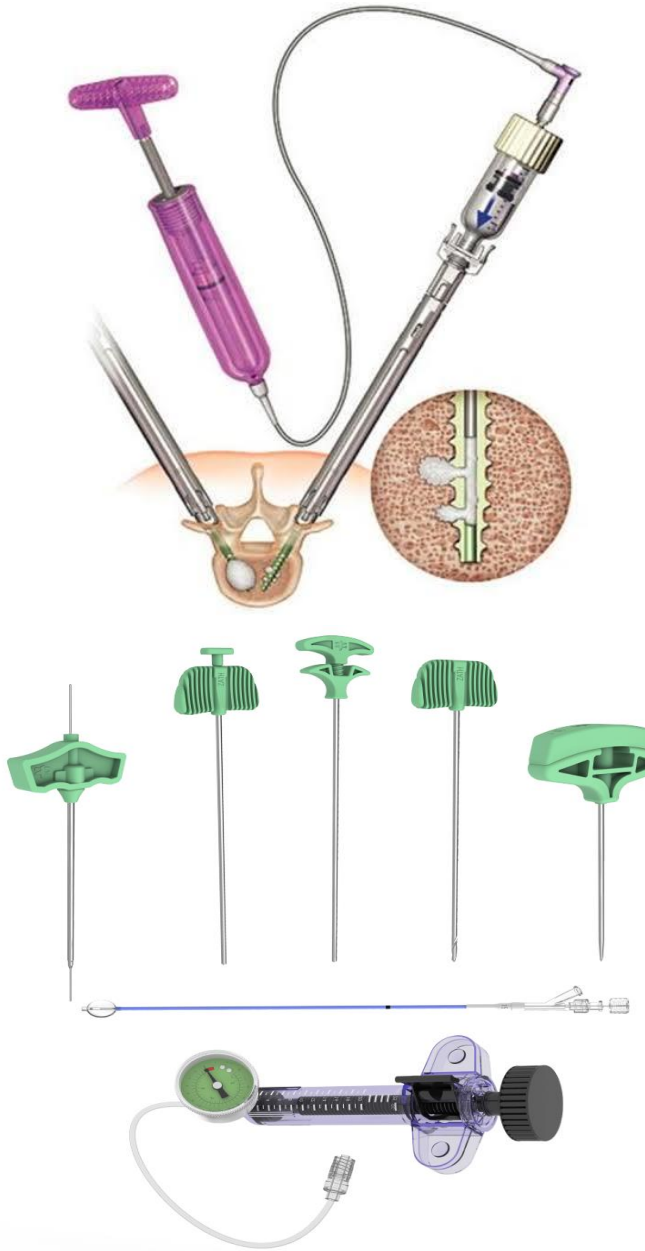
Specifications
<i>8mm Length</i>
<i>10mm Length</i>
<i>12mm Length</i>
<i>14mm Length</i>
<i>16mm Length</i>
<i>18mm Length</i>
<i>8mm Length</i>

### Odontoid Screw



# KYPHONPLASTY AND VERTEBROBLASTY SYSTEM

## Kyphonplasty and Vertebroplasty Kit and Cement



Specifications						
Cement Pump	Balloon Catheter	Bone Cement Filling Device	Dilating Cannula	Drill Bit	Guiding Sleeve (Including Guide wire)	Puncture Needle
1~20ml/30atm	10mm	Φ3.4 x 195mm	Φ4.0 x 129mm	Φ3.4 x 190mm	Φ4.0 x 129mm	Φ2.5 x 130mm
	15mm					Φ3.0 x 100mm
	20mm					Φ3.0 x 130mm
						Φ4.0 x 126mm

# SPINE SOLUTIONS !



LithosMed

.....*Bridging the gap to qualitative healthcare*