

# Stapedectomy Implants: Pistons

## Piston

- Double-width platinum shaft
- Titanium body
- Depth marker
- Offset piston with angled shaft
- Right and left versions

Product	Description	SD	SL	L	Qty
101	Straight, platinum and titanium	0.5 mm	1.25 mm	4.00 mm	1
102	Straight, platinum and titanium	0.5 mm	1.25 mm	4.25 mm	1
103	Straight, platinum and titanium	0.5 mm	1.25 mm	4.50 mm	1
104	Straight, platinum and titanium	0.5 mm	1.25 mm	4.75 mm	1
105	Left ear offset, platinum and titanium	0.5 mm	1.25 mm	4.50 mm	1
106	Left ear offset, platinum and titanium	0.5 mm	1.25 mm	4.75 mm	1
107	Left ear offset, platinum and titanium	0.5 mm	1.25 mm	5.00 mm	1
108	Right ear offset, platinum and titanium	0.5 mm	1.25 mm	4.50 mm	1
109	Right ear offset, platinum and titanium	0.5 mm	1.25 mm	4.75 mm	1
110	Right ear offset, platinum and titanium	0.5 mm	1.25 mm	5.00 mm	1



## Loop Pistons

Product	Description	LID	SD	L	Qty
111	Fluoroplastic	0.6 mm	0.4 mm	6.0 mm	1
112	Fluoroplastic	0.6 mm	0.6 mm	6.0 mm	1



## Large Loop Pistons

- Larger loop inside diameter of 0.8 mm

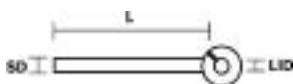
Product	Description	LID	SD	L	Qty
113	Fluoroplastic	0.80 mm	0.3 mm	4.5 mm	1
114	Fluoroplastic	0.80 mm	0.3 mm	5.0 mm	1
115	Fluoroplastic	0.80 mm	0.3 mm	6.0 mm	1
116	Fluoroplastic	0.80 mm	0.4 mm	6.0 mm	1
117	Fluoroplastic	0.80 mm	0.6 mm	4.0 mm	1
118	Fluoroplastic	0.80 mm	0.6 mm	4.5 mm	1
119	Fluoroplastic	0.80 mm	0.6 mm	5.0 mm	1
120	Fluoroplastic	0.80 mm	0.6 mm	6.0 mm	1



## Malleus Loop With Malleable Shaft

- Stainless steel core
- Opening in loop at 2 o'clock position

Product	Description	LID	SD	L	Qty
121	Fluoroplastic and stainless steel	0.86 mm	0.4 mm	12 mm	1



All dimensions are approximate.

LID = loop inner diameter    SD = shaft diameter    SL = shaft length    L = length



## Platinum And Fluoroplastic Stapedotomy Pistons

Product	Description	SD	SL	L	Qty
122	Platinum and fluoroplastic	0.6 mm	2.0 mm	4.25 mm	1
123	Platinum and fluoroplastic	0.6 mm	2.0 mm	4.50 mm	1
12	Platinum and fluoroplastic	0.6 mm	2.0 mm	4.75 mm	1



## Mcgee Modified Loop Pistons

- Round loop design with closure tab
- One piece, stainless steel

Product	Description	SD	SL	L	Qty
125	Stainless steel	0.5 mm	2.43 mm	3.75 mm	1
126	Stainless steel	0.5 mm	2.43 mm	4.25 mm	1
127	Stainless steel	0.5 mm	2.43 mm	4.50 mm	1
128	Stainless steel	0.5 mm	2.43 mm	4.75 mm	1



## Portmann Piston — Clip

- Curved wire clip

Product	Description	SD	SL	L	Clip	Qty
129	Stainless steel and fluoroplastic	0.4 mm	4.00 mm	7 mm	0.6 mm	1



All dimensions are approximate.

SD = shaft diameter    SL = shaft length    L = length



### Scheer Piston And Wire

- Fluoroplastic piston, stainless steel wire

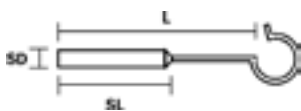
Product	Description	SD	SL	L	Qty
130	Stainless steel and fluoroplastic	0.6 mm	1.8 mm	5.0 mm	1



### Schuknecht-Type Piston And Wire

- Fluoroplastic piston, stainless steel wire

Product	Description	SD	SL	L	Qty
131	Stainless steel and fluoroplastic	0.6 mm	2.7 mm	3.50 mm	1
132	Stainless steel and fluoroplastic	0.6 mm	2.7 mm	4.00 mm	1
133	Stainless steel and fluoroplastic	0.6 mm	2.7 mm	4.25 mm	1
134	Stainless steel and fluoroplastic	0.6 mm	2.7 mm	4.50 mm	1
135	Stainless steel and fluoroplastic	0.6 mm	2.7 mm	4.75 mm	1
136	Stainless steel and fluoroplastic	0.6 mm	2.7 mm	5.00 mm	1



All dimensions are approximate.

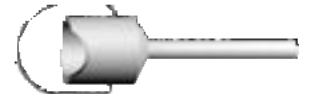
SD = shaft diameter    SL = shaft length    L = length

# Stapedectomy Implants: Cupped Pistons

## Bailey/Pappas Modified Cupped Pistons

- Designed with no hole in shaft
- Polished stainless steel

Product	Description	SD	WD	L	Qty
137	Stainless steel	0.4 mm	1 mm	4.00 mm	1
138	Stainless steel	0.4 mm	1 mm	4.25 mm	1
139	Stainless steel	0.4 mm	1 mm	4.50 mm	1



## Lippy Modified Cupped Pistons

- Large, deep well
- Polished stainless steel

Product	Description	SD	WD	L	FL	Qty
140	Stainless steel	0.6 mm	1 mm	4.0 mm	3.20 mm	1
141	Stainless steel	0.6 mm	1 mm	4.5 mm	3.70 mm	1
142	Stainless steel	0.4 mm	1 mm	4.0 mm	3.20 mm	1
143	Stainless steel	0.4 mm	1 mm	4.5 mm	3.70 mm	1
144	Stainless steel	0.4 mm	1 mm	5.0 mm	4.20 mm	1



## Roberson Stapes Prosthesis

- Narrow design and malleable shaft
- Textured bucket surface
- Piston depth gauge

Product	Description	SD	WD	FL	Qty
145	Titanium	0.6 mm	0.9 mm	4.00 mm	1
146	Titanium	0.6 mm	1.0 mm	4.00 mm	1
147	Titanium	0.6 mm	1.0 mm	4.50 mm	1
148	Titanium	0.6 mm	0.9 mm	4.25 mm	1
149	Titanium	0.6 mm	1.0 mm	4.25 mm	1



## Robinson™ Cupped Pistons

- Cupped piston design
- Polished stainless steel, matte finish well

Product	Description	SD	WD	FL	Qty
150	Stainless steel	0.6 mm	0.9 mm	4.0 mm	1
151	Stainless steel	0.6 mm	0.9 mm	4.5 mm	1
152	Stainless steel	0.6 mm	1.0 mm	4.0 mm	1
153	Stainless steel	0.6 mm	1.0 mm	4.5 mm	1
154	Stainless steel	0.4 mm	0.9 mm	4.0 mm	1
155	Stainless steel	0.4 mm	1.0 mm	4.0 mm	1
156	Stainless steel	0.4 mm	1.0 mm	4.5 mm	1





## Robinson-Moon-Lippy Offset Cupped Pistons

- Offset shaft
- Large, deep well
- Fenestrated
- Polished stainless steel, matte finish well



Product	Description	SD	WD	L	FL	Qty
157	Stainless steel	0.4 mm	1 mm	4.5 mm	3.73 mm	1

# Universal Ossicular Reconstruction Implants: Titanium

## Universal Titanium Prostheses

- The universal titanium prosthesis is available in two head designs
- Fenestrated head
- The titanium shaft may be trimmed to length with scissors
- Universal design

Product	Description	Qty
158	Universal titanium prosthesis, round head, with shoe	1
159	Universal titanium prosthesis, cam head, with shoe	1



## Universal Titanium Prosthesis, Vincent Head, With Shoe

- Dense hydroxylapatite head features a deep, centered groove
- The titanium shaft may be trimmed to length with scissors
- Universal design
- Shoe packaged as a partial; may be trimmed to create a total shoe

Product	Description	PID	HD	SD	L	Qty
160	Titanium and hydroxylapatite head/shaft assembly titanium and Flex H/A shoe assembly	1.1 mm	3.25 mm	0.25 mm	10 mm	1



# Partial Ossicular Reconstruction Implants: Titanium

## Partial Titanium Prosthesis

- Fully cannulated design

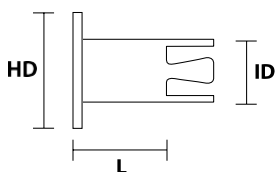
Product	Description	HD	L	ID	Qty
161	Titanium	2.5 mm	2 mm	1.1 mm	1



## Vincent Partial Titanium Prosthesis

- Dense hydroxylapatite head features a deep, centered groove

Product	Description	HD	L	ID	Qty
162	Titanium	3.25 mm	2 mm	1.1 mm	1



All dimensions are approximate.  
HD = head diameter    L = length    ID = inner diameter

# Partial Ossicular Reconstruction Implants: Dense Hydroxylapatite

## Incus Partial Prosthesis

- Grooved top
- Partially cannulated shaft

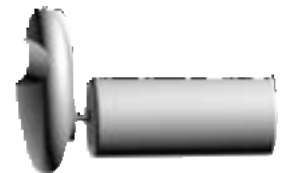
Product	Description	SID	L	Qty
163	Hydroxylapatite	1.1 mm	3.75 mm	1



## Notched Offset Partial

- Dense H/A cap
- Offset cap

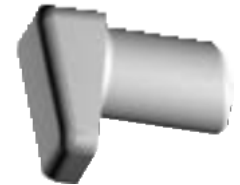
Product	Description	SID	HD	L	Qty
164	Hydroxylapatite	1.14 mm	4 mm	5 mm	1
165	with malleable link, hydroxylapatite with titanium	1.14 mm	4 mm	5 mm	1



## Partial 75° Rectangular

- Rectangular head
- Angled shaft
- Partially cannulated shaft

Product	Description	SID	H	L	Qty
166	Hydroxylapatite	1.1 mm	2.5 x 3.5 mm	4 mm	1



## Partial 90° Off-Center Round

- Off-centered round head
- Fully cannulated shaft

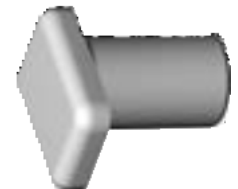
Product	Description	SID	HD	L	Qty
167	Hydroxylapatite	1.1 mm	4 mm	5 mm	1



## Partial 90° Rectangular

- Rectangular head
- Partially cannulated shaft

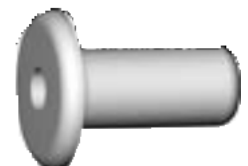
Product	Description	SID	H	L	Qty
168	Hydroxylapatite	1.1 mm	2.5 x 3.5 mm	4 mm	1



## Partial 90° Round

- Round head
- Fully cannulated shaft

Product	Description	SID	HD	L	Qty
169	Hydroxylapatite	1.1 mm	4 mm	5 mm	1



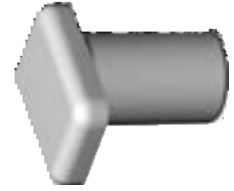


# Partial Ossicular Reconstruction Implants: Dense Hydroxylapatite

## Partial 90° rectangular

- Rectangular head
- Partially cannulated shaft

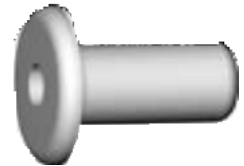
Product	Description	SID	H	L	Qty
168	Hydroxylapatite	1.1 mm	2.5 x 3.5 mm	4 mm	1



## Partial 90° round

- Round head
- Fully cannulated shaft

Product	Description	SID	HD	L	Qty
169	Hydroxylapatite	1.1 mm	4 mm	5 mm	1



All dimensions are approximate.

SID = shaft inner diameter    H = head    HD = head diameter    L = length

# Partial Ossicular Reconstruction Implants: Flex H/A

## Silverstein Incus-Stapes Connector

Product	Description	ID	OD	H	Qty
170	Hydroxylapatite	1.1 mm	2.1 mm	1 mm	1



## Cause Mini-Head Partial With Malleable Link

- Flex H/A shaft may be trimmed with a knife

Product	Description	SID	HD	L	Qty
171	Hydroxylapatite with Flex H/A	1.14 mm	2.5 mm	5 mm	1



## Cause Notched Offset Partial With Malleable Link

- Offset, dense H/A cap with notch
- Flex H/A shaft may be trimmed with a knife
- Malleable titanium link

Product	Description	SID	HD	L	Qty
172	Hydroxylapatite with Flex H/A	1.14 mm	3.25 mm	5 mm	1



## Cause-Vincent Notched Narrow Partial With Short Malleable Link

- Offset, dense H/A cap with notch
- Flex H/A shaft may be trimmed with a knife
- Malleable titanium link

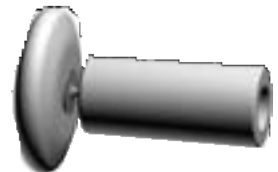
Product	Description	SID	HD	L	Qty
173	Hydroxylapatite with Flex H/A and titanium	1.14 mm	3.25 mm	14 mm	1



## Centered Partial With Malleable Link

- Gently rounded, dense H/A cap
- Flex H/A shaft can be trimmed

Product	Description	SID	HD	L	Qty
174	Hydroxylapatite with Flex H/A and titanium	1.14 mm	4 mm	5 mm	1
175	Hydroxylapatite with Flex H/A and titanium	1.14 mm	3 mm	5 mm	1



## Centered Partial, Non-Malleable

- Prosthesis is fully cannulated
- Flex H/A shaft may be trimmed with a knife

Product	Description	SID	HD	L	Qty
176	Hydroxylapatite and Flex H/A	1.14 mm	3 mm	5 mm	1

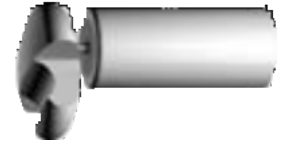


# Partial Ossicular Reconstruction Implants: Flex H/A

## Lesinski Offset Partial With Malleable Link

- H/A cap features unique notch
- Flex H/A shaft may be trimmed with a knife

Product	Description	SID	HD	L	Qty
177	Hydroxylapatite with Flex H/A and titanium	1.14 mm	3.25 mm	5 mm	1



## Malleus Cradle Partial With Malleable Link

- Dense H/A cap
- Titanium link
- Trimmable Flex H/A shaft

Product	Description	SID	H	L	Qty
178	Hydroxylapatite with Flex H/A and titanium	1.14 mm	2 x 4.4 mm	5 mm	1



All dimensions are approximate.

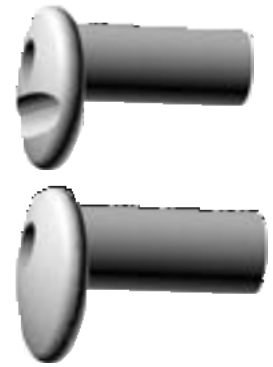
SID = shaft inner diameter    H = head    HD = head diameter    L = length

# Partial Ossicular Reconstruction Implants: Flex H/A

## Millen thin head partials, non-malleable

- Thin, dense Flex H/A offset cap
- Fully cannulated
- Flex H/A shaft may be trimmed

Product	Description	SID	HD	L	Qty
179	Offset, notched hydroxylapatite and Flex H/A	1.14 mm	4 mm	5 mm	1
180	Hydroxylapatite and Flex H/A	1.14 mm	4 mm	5 mm	1



## Notched offset partial with malleable link

- Dense H/A cap
- Cap is offset
- Trimmable Flex H/A shaft

Product	Description	SID	HD	L	Qty
181	Hydroxylapatite with Flex H/A	1.14 mm	4 mm	5 mm	1



All dimensions are approximate.

SID = shaft inner diameter    H = head    HD = head diameter    L = length

# Partial Ossicular Reconstruction Implants: Flex H/A Necrosis

## Cause Tri-Axial Incus Necrosis Prosthesis

- Dense H/A offset cap and Flex H/A

Product	Description	IID	STID	HD	Qty
182	Hydroxylapatite with Flex H/A and titanium	0.8 mm	1.17 mm	3.25 mm	1



## Flex H/A Incus Necrosis Prostheses

- Flex H/A material can be modified with knife to accommodate anatomical requirements

Product	Description	IID	STID	Qty
183	Flex H/A, small	0.8 mm	1.00 mm	1
184	Flex H/A, medium	0.8 mm	1.17 mm	1
185	Flex H/A, large	1.0 mm	1.17 mm	1



All dimensions are approximate.

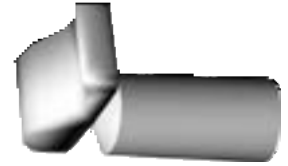
SID = shaft inner diameter    H = head    HD = head diameter    L = length

# Partial Ossicular Reconstruction Implants: H/A Combination

## Cause malleus head partial

- Dense H/A head

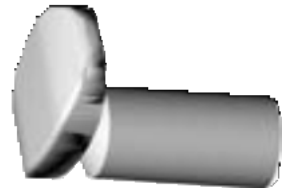
Product	Description	SID	H	L	Qty
186	Hydroxylapatite with polycel	1.17 mm	4 x 2.1 mm	4.75 mm	1



## Moretz cam head partial

- Hydroxylapatite head with polycel and stainless steel
- Cam head design

Product	Description	SID	H	L	Qty
187	Hydroxylapatite with polycel	1.17 mm	4 x 2.7 mm	10 mm	1



All dimensions are approximate.

SID = shaft inner diameter    H = head    HD = head diameter    L = length

# Partial Ossicular Reconstruction Implants: Polycel

## Austin Modified Partial

- Head is off-center
- Fully cannulated

Product	Description	SID	HD	L	Qty
188	Polycel	1.17 mm	3 mm	4.75 mm	1



## Cause Fluoroplastic Partial

- Polycel head
- Fluoroplastic shaft

Product	Description	SID	HD	L	Qty
189	Polycel and Fluoroplastic	1.17 mm	4 mm	4.75 mm	1



## Sheehy Partial Ossicular Prosthesis (POP)

Product	Description	SID	HD	L	Qty
190	Polycel	1.17 mm	3 mm	4.75 mm	1



All dimensions are approximate.

SID = shaft inner diameter    H = head    HD = head diameter    L = length

# Total Ossicular Reconstruction Implants: Dense Hydroxylapatite

## Cause Notched Offset Total With Short Malleable Link

- Shortened, malleable titanium link
- Notched offset cap
- Dense H/A cap
- Off-set design

Product	Description	SID	HD	L	Qty
191	Hydroxylapatite and titanium	0.8 mm	3.25 mm	9 mm	1



## Mushroom Head Total With Malleable Link

- Dense hydroxylapatite head

Product	Description	SID	HD	L	Qty
192	Hydroxylapatite and titanium	0.8 mm	4 mm	7 mm	1



## Notched Offset Total With Malleable Link

- Flexible titanium link
- Notched cap
- Offset design

Product	Description	SID	HD	L	Qty
193	Hydroxylapatite and titanium	0.8 mm	4 mm	7 mm	1



All dimensions are approximate.

SID = shaft inner diameter    H = head    HD = head diameter    L = length



# Total Ossicular Reconstruction Implants: Dense Hydroxylapatite

## Total 75° Rectangular

- Rectangular head
- Solid, dense H/A
- Angled shaft
- May be shaped with diamond bur under irrigation

Product	Description	SID	H	L	Qty
194	Hydroxylapatite	0.89 mm	2.54 x 3.5 mm	8 mm	1



## Total 90° Rectangular

- Rectangular head
- Solid dense H/A
- May be shaped with diamond bur under irrigation

Product	Description	SID	H	L	Qty
195	Hydroxylapatite	0.89 mm	2.54 x 3.5 mm	8 mm	1



All dimensions are approximate.

SID = shaft inner diameter    H = head    L = length

## Total Ossicular Reconstruction Implants: H/A Combination

### Total 90° Off-Center Round

- Off-centered round head
- Solid dense H/A
- May be shaped with diamond bur under irrigation

Product	Description	SID	HD	L	Qty
196	Hydroxylapatite	0.89 mm	4.00 mm	8 mm	1



All dimensions are approximate.

SID = shaft inner diameter    HD = head diameter    L = length

# Total Ossicular Reconstruction Implants: Flex H/A

## Cause Microlite™ Total With Short Malleable Link

- Thinner cap is notched and offset
- Shortened malleable link allows trimming to short lengths for anatomical variations

Product	Description	SD	HD	L	Qty
197	Hydroxylapatite with Flex H/A and titanium	1 mm	3.25 mm	9 mm	1



## Cause Notched Offset Total With Short Malleable Link

- Shortened malleable link allows trimming to short lengths
- Notched, dense H/A cap
- Trimmable Flex H/A shaft

Product	Description	SD	HD	L	Qty
198	Hydroxylapatite with Flex H/A and titanium	1 mm	3.25 mm	9 mm	1



All dimensions are approximate.

SID = shaft inner diameter    H = head    HD = head diameter    L = length

# Total Ossicular Reconstruction Implants: Flex H/A

## Cause-Vincent Notched Narrow Cap With Stainless Steel Wire

- Narrow, notched, offset, dense H/A cap
- Trimmable Flex H/A shaft
- Stainless steel wire through shaft

Product	Description	SD	HD	L	Qty
199	Hydroxylapatite with Flex H/A & SS wire	1 mm	3.25 mm	9 mm	1



## Centered Total With Malleable Link

- Rounded, dense H/A cap
- Trimmable Flex H/A shaft

Product	Description	SID	HD	L	Qty
200	Hydroxylapatite with Flex H/A and titanium	1 mm	4 mm	7 mm	1
201	Hydroxylapatite with Flex H/A and titanium	1 mm	3 mm	7 mm	1



0500



0501

## Centered Total, Non-Malleable

- Dense H/A cap
- Non-malleable shaft, made totally of trimmable Flex H/A

Product	Description	SD	HD	L	Qty
202	Hydroxylapatite with Flex H/A	1 mm	3 mm	9 mm	1



## Lesinski Offset Total With Malleable Link

- Trimmable Flex H/A shaft

Product	Description	SD	HD	L	Qty
203	Hydroxylapatite with Flex H/A and titanium	1 mm	3.25 mm	8 mm	1



All dimensions are approximate.

SID = shaft inner diameter    H = head    HD = head diameter    L = length

# Total Ossicular Reconstruction Implants: Flex H/A

## Malleus Cradle Total With Malleable Link

- Dense H/A cap
- Trimmable Flex H/A shaft

Product	Description	SD	H	L	Qty
204	Hydroxylapatite with Flex H/A and titanium	1 mm	2 x 4.4 mm	10.2 mm	1



## Millen Thin Head Notched Total, Non-Malleable

- Thin, dense Flex H/A offset cap
- Notched head designed
- Trimmable Flex H/A shaft

Product	Description	SD	HD	L	Qty
205	Hydroxylapatite and Flex H/A	1 mm	4 mm	9 mm	1



## Offset Total With Malleable Link

- Dense H/A offset cap and malleable link
- Trimmable Flex H/A shaft

Product	Description	SD	HD	L	Qty
206	Hydroxylapatite with Flex H/A and titanium	1 mm	4 mm	7 mm	1



## Wiet Offset Total With Malleable Link

- Mid-size dense H/A cap
- Malleable titanium link
- Trimmable Flex H/A shaft

Product	Description	SD	HD	L	Qty
207	Hydroxylapatite with Flex H/A and titanium	1 mm	3.25 mm	9 mm	1



All dimensions are approximate.

SID = shaft inner diameter    H = head    HD = head diameter    L = length

## Total Ossicular Reconstruction Implants: Polycel

### Cause Stapedotomy Revision Prosthesis With Short Malleable Link

- Short malleable link allows prosthesis to be trimmed to very short lengths
- Notched H/A cap

Product	Description	SD	HD	L	Qty
208	Hydroxylapatite with fluoroplastic	0.4 mm	3.25 mm	9 mm	1



### Austin Modified Total

Product	Description	SD	HD	L	Qty
209	Polycel and stainless steel	0.6 mm	3 mm	8 mm	1



### Brackmann Modified Total

Product	Description	SD	HD	L	Qty
210	Polycel and stainless steel	0.6 mm	3 mm	8 mm	1



### Sheehy Total Ossicular Prosthesis (TOP)

Product	Description	SD	HD	L	Qty
211	Polycel	0.8 x 1 mm	3 mm	8 mm	1



All dimensions are approximate.

SID = shaft inner diameter    H = head    HD = head diameter    L = length

# Universal Ossicular Reconstruction Implants: Flex H/A

## Bojrab Universal Prosthesis

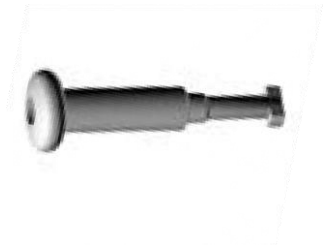
Product	Description	PID	HD	PL	TL	Qty
212	Hydroxylapatite with Flex H/A shaft	1.14 mm	3 mm	3.65 mm	7 mm	1
213	Hydroxylapatite with Flex H/A shaft	1.14 mm	3 mm	6.00 mm	9 mm	1



## Convertible Prosthesis — Total, Partial, Or Strut

- Three-in-one implant: options include total, with or without a footplate, a partial or a strut
- Supplied as a partial with separate insertable total shaft with shoe
- Cap is dense H/A shaft is Flex H/A

Product	Description	PID	HD	PL	TL	Qty
214	Hydroxylapatite and Flex H/A	1.14 mm	3 mm	5 mm	8 mm	1



## Garcia-Ibanez Notched Universal Prosthesis

- Converts from a total to a partial with a knife

Product	Description	PID	H	PL	TL	Qty
215	Hydroxylapatite, Flex H/A	1.14 mm	3.3 x 2.9 mm	4.25 mm	8 mm	1



All dimensions are approximate.

SID = shaft inner diameter    H = head    HD = head diameter    L = length

# Middle Ear Liner

## Cause stapes sheet

Product	Description	L	H	T	Qty
216	Fluoroplastic	15 mm	8 mm	.03 mm	1

